



The Informer GO Experience

Brad Leupen

CEO



Agenda

1. What is Informer GO?
2. Demo
3. Roadmap
4. Q&A





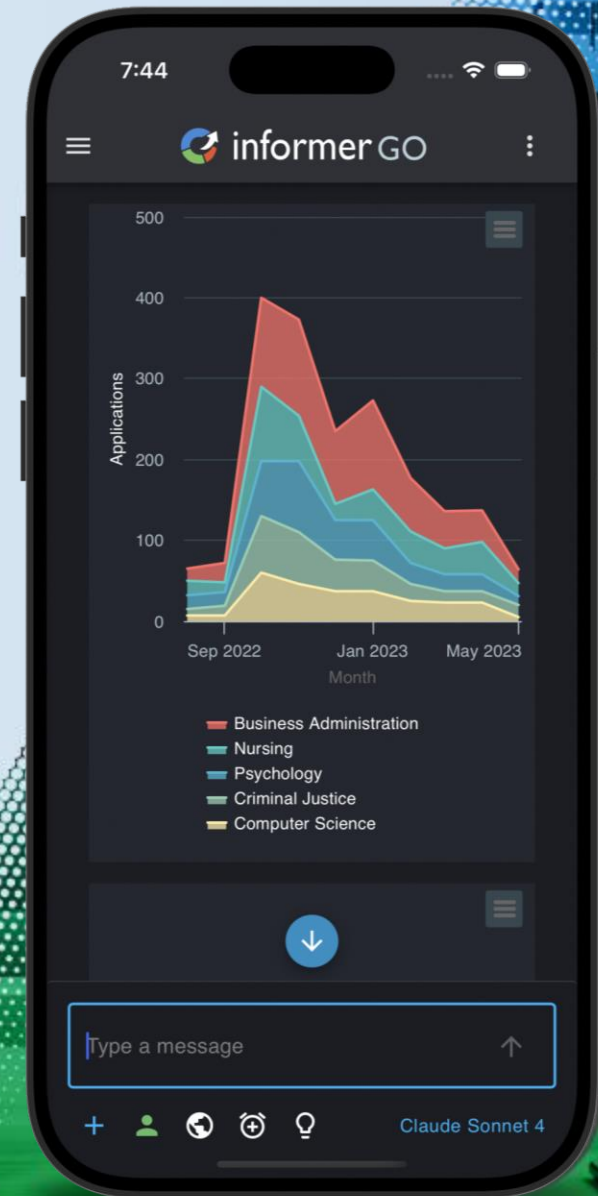
informer GO

Enterprise AI on Proven Infrastructure



Ask Anything from Anywhere

- Mobile
 - Apple iOS – iPhone/iPad – App Store
 - Android – Google Play Store
- Desktop
 - Windows
 - Mac OSX (ARM and Intel)
 - Linux
- Browsers
 - All modern browsers



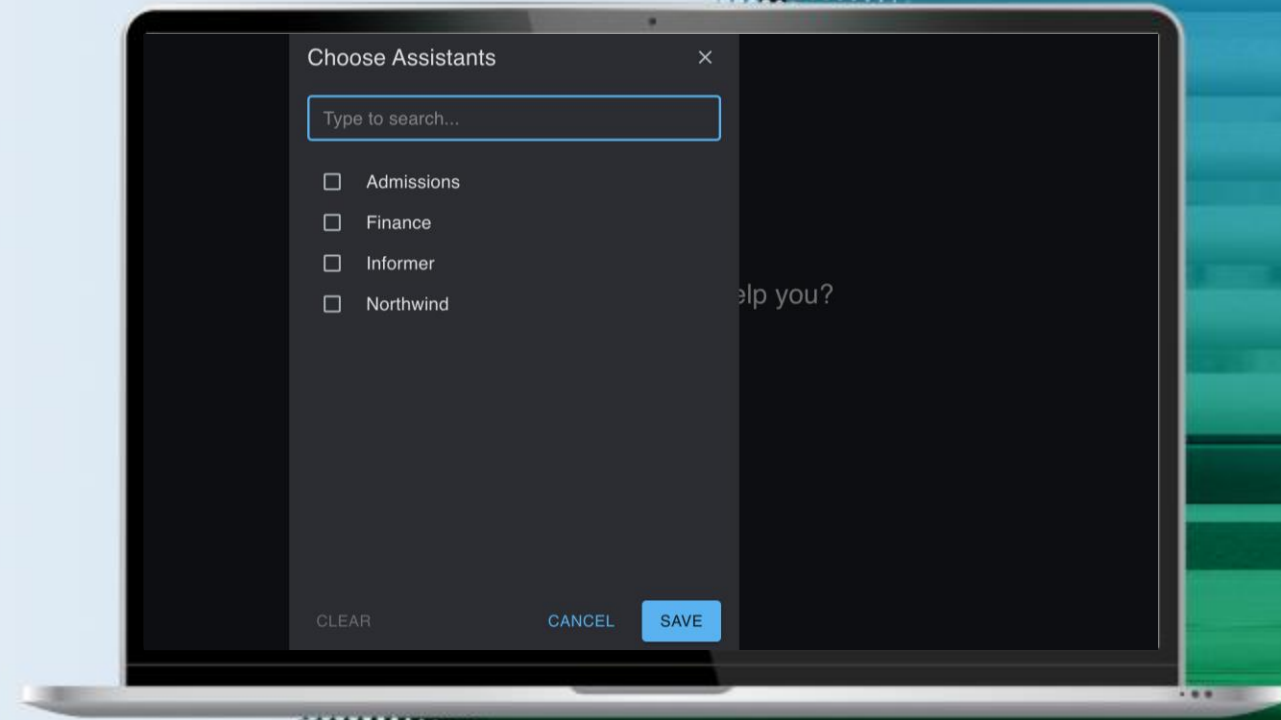
Intelligent Automation

- Switch between dozens of AI models
- Schedule prompts to run in the background and alert you with email or push notifications
- Enable real-time web search



Rich Content Processing

- Upload images and documents
- Connect your desktop filesystem
- Access Informer Assistants



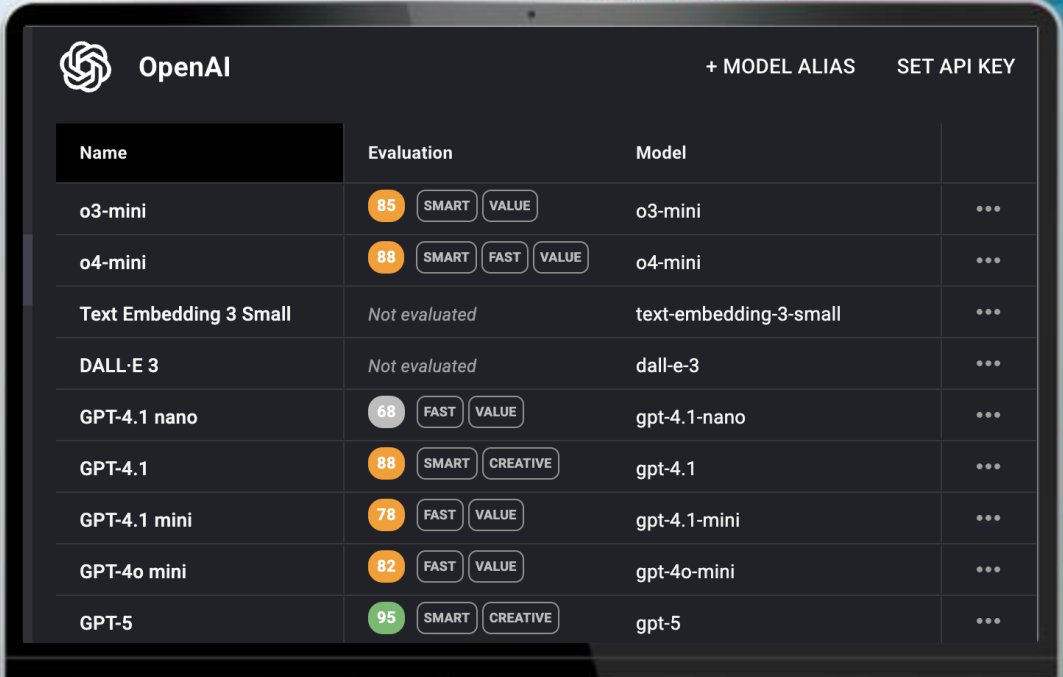
Visual Analytics

- View inline charts and analytics
- Recall saved conversations across devices
- Export and share insights



Enterprise Model Control

- Deploy third-party or internally hosted models
- Create custom model aliases and configurations
- Add organization-specific instructions
- Switch models based on use case

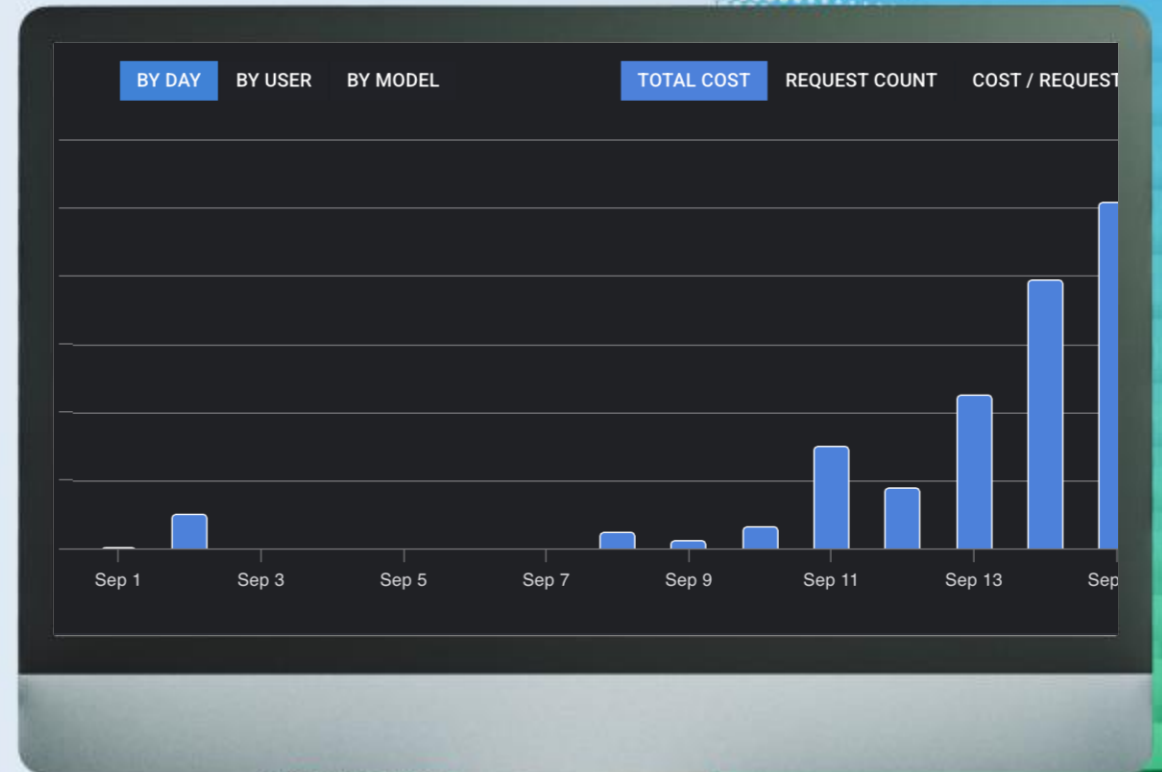


OpenAI + MODEL ALIAS SET API KEY

Name	Evaluation	Model	
o3-mini	85 SMART VALUE	o3-mini	...
o4-mini	88 SMART FAST VALUE	o4-mini	...
Text Embedding 3 Small	Not evaluated	text-embedding-3-small	...
DALL-E 3	Not evaluated	dall-e-3	...
GPT-4.1 nano	68 FAST VALUE	gpt-4.1-nano	...
GPT-4.1	88 SMART CREATIVE	gpt-4.1	...
GPT-4.1 mini	78 FAST VALUE	gpt-4.1-mini	...
GPT-4o mini	82 FAST VALUE	gpt-4o-mini	...
GPT-5	95 SMART CREATIVE	gpt-5	...

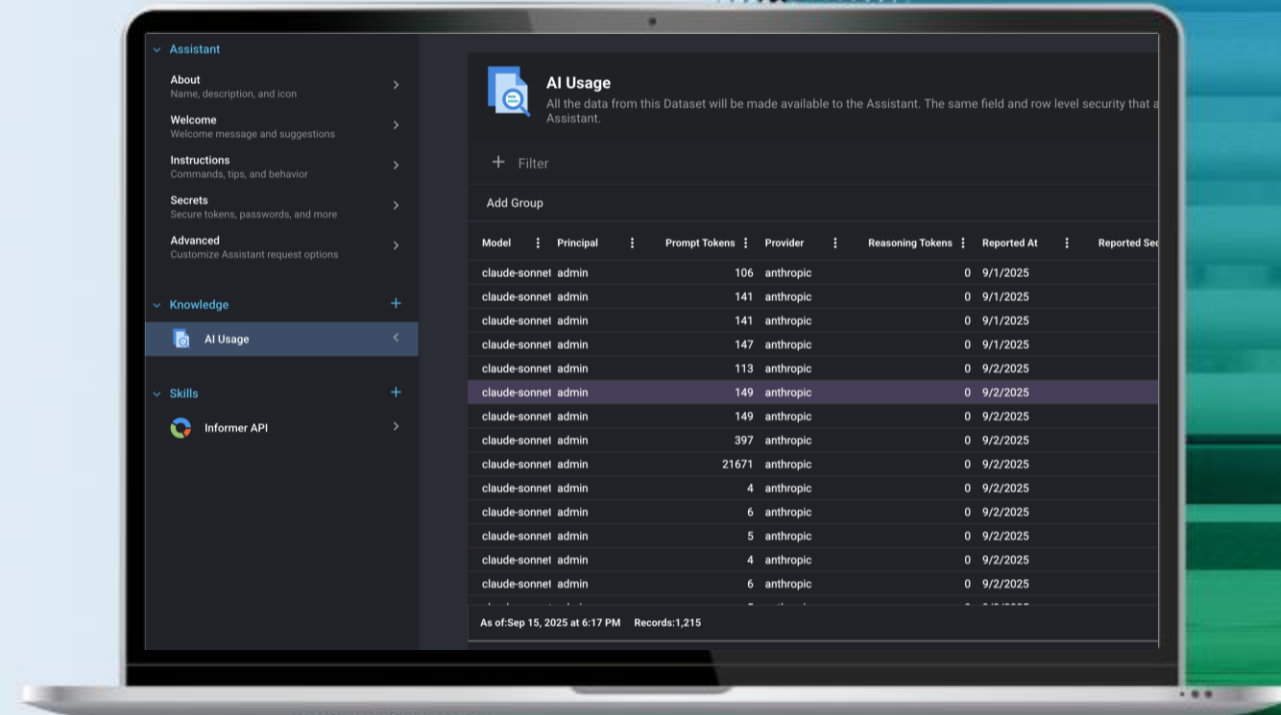
AI Governance

- Set usage limits and monitor consumption
- Analyze response accuracy and business impact
- Track ROI across teams and projects
- Generate compliance reports
- Reduce AI Sprawl



Connect Your Enterprise

- API integrations with existing systems
- Document management system access
- Structured data connectivity
- Simple Informer API Integration



Question Examples



Grants & Sponsored Programs

“Help me fill out this grant proposal based on my research.”

- Needs: project overview, methods, budget, timeline, team qualifications, research data, and supporting institutional metrics.
- ROI: More time on research, less time filling out grants, ability to apply for more

Student Affairs

“Build a student work schedule.”

- Needs: class times, labor laws, institutional policies, and availability matching.
- ROI: Saves each supervisor ~32 hours a year times the number of supervisors

Alumni Relations

“Recommend effective ways to increase alumni donor giving in College of Engineering”

- Needs: demographics, giving history, engagement metrics, communication preferences, and campaign effectiveness data
- ROI: Increase in donations, decrease in admin costs

More Examples



Student

“Help me understand this week’s topic based on my learning style”

- Needs: Course syllabus, lecture materials, assignment data
- ROI: Increase learning outcomes by 2 standard deviations. (Benjamin S. Bloom, The 2 Sigma Problem)

Faculty

“Email me a summary every morning about what I should address based on what my students are asking”

- Needs: Course syllabus, lecture materials, summary of student questions
- ROI: Faster and more effective changes to lectures based on feedback

Finance

“Talk to me about our receivables”

- Needs: Secure access to latest accounting data
- ROI: Get real-time insights from an AI partner



informer GO

Demo Time

Roadmap – What's next?



- MCP (Model Context Protocol) Integrations
- Informer GO Plugins for Office and Browser
- AI-Driven Forms and Workflows