



Magic Visuals and Dashboarding

Robin Lamb and Regina Lopez

Entrinsik



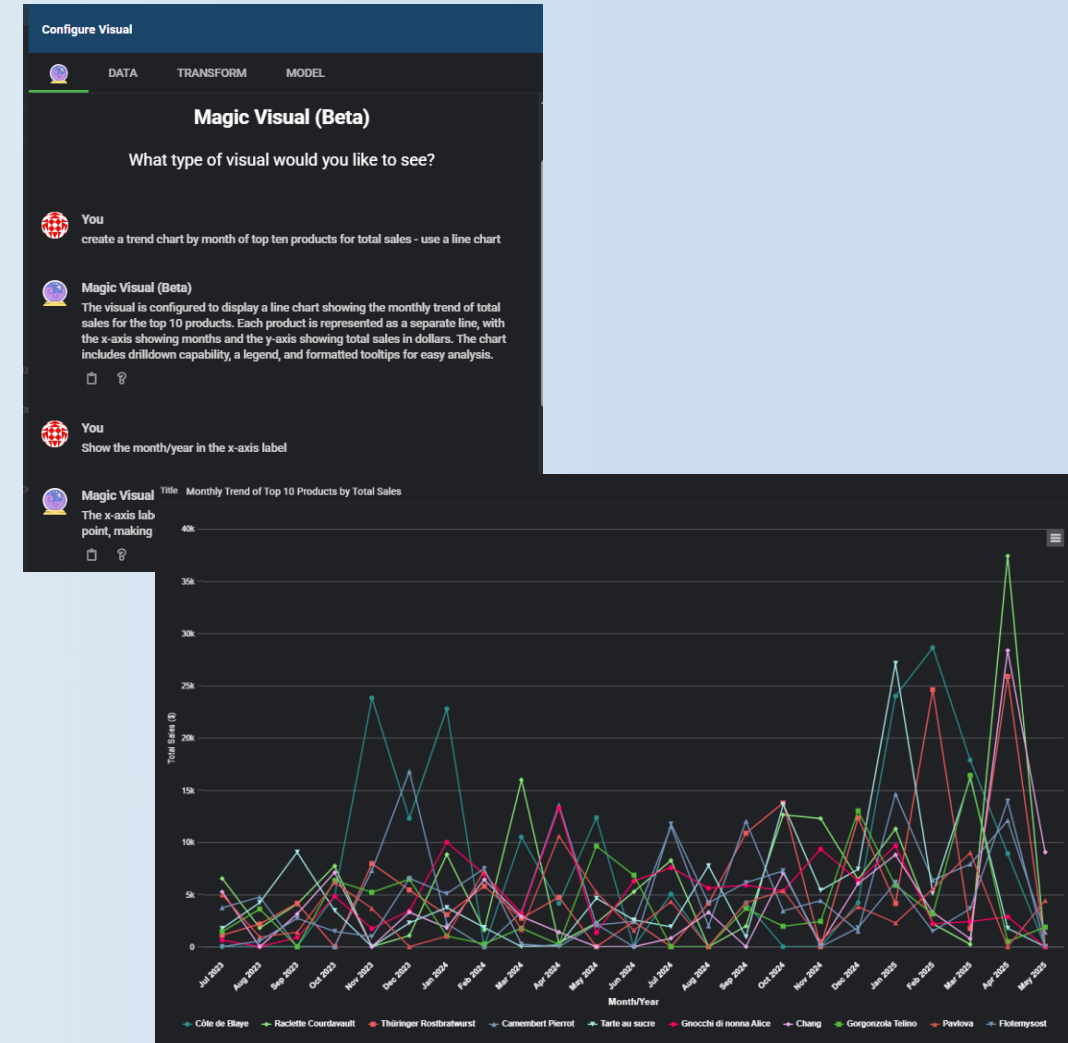
Agenda

1. Magic Visuals
2. Types of Visuals
3. Dashboard
4. Dashboard Input Filters
5. Sharing a Dashboard
6. Interacting with a Dashboard



Magic Visuals

- Dynamic tool to help you create visuals
- Turn raw data into compelling insights
- Faster and easier to create visuals
- No need for complex configurations
- Allows for customization of labels, color
- Describe what you need and watch the Magic
- Can be created in the Dataset or Dashboard
- Add these visuals to existing or new Dashboards
- AI needs to be enabled in the Administration section
- You can manage and control AI access and expenses



Types of Visuals

- Informer provides a variety of visual options
 - Charts
 - KPIs
 - Maps
 - Tables
 - Static
 - Magic Visual
- Visuals can...
 - be saved to the Dataset
 - be drillable
 - be filtered
 - apply Datasource security
- Visuals can be shared via URL or embedded
- Configuration menus for different types of visuals
- Pre-filter visuals, if needed, for specific users



Dashboards

- Reports that help users analyze and understand trends and patterns in their data
- Shows a visual representation of data
- Can use tools such as Visualizations, Input Filters, and Panels
- Interactive, customizable, downloadable
- A user-friendly way to learn about your data
- Can be embedded



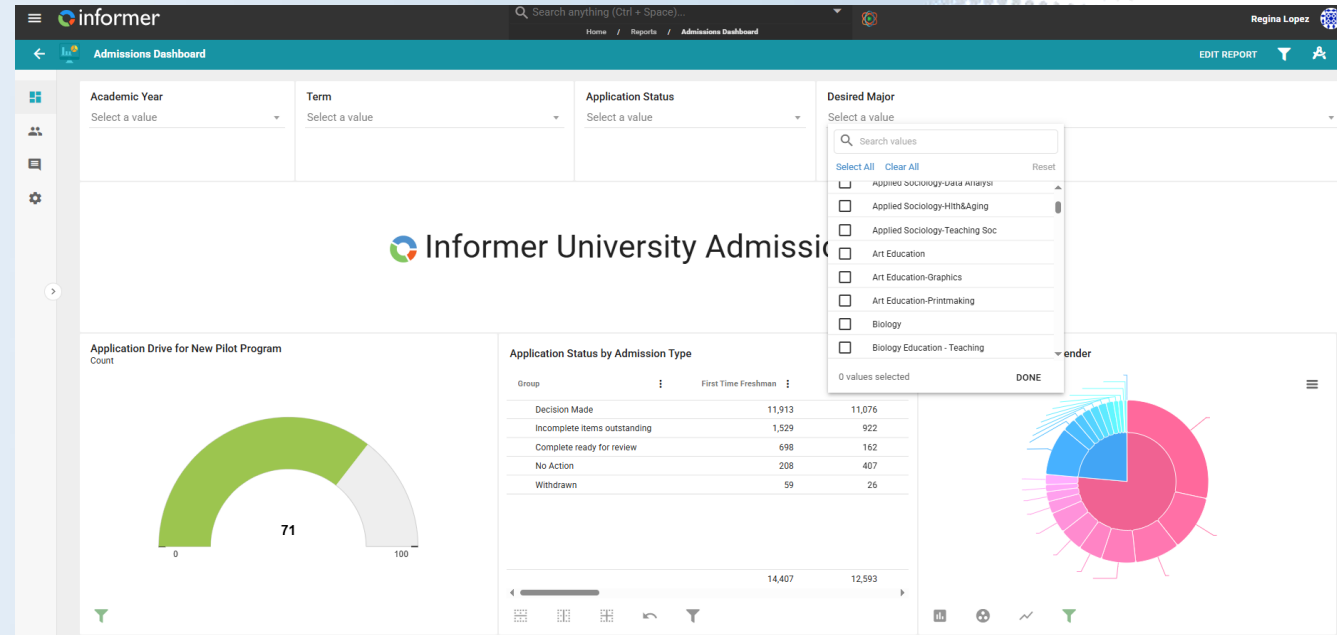
Dashboards

- Can use multiple Datasets
- Can use same Dataset multiple times (with different Filters and/or Inputs)
- Can be pre-filtered
- Use existing visuals or create new one(s)
- Use Panels to group Visuals or Filters
- Specify colors consistently across data values
- Titles and HTML visuals
- Can be shared via URL and/or embedded
- Create public interactive Dashboards



Dashboard Input Filters

- Elements used to interactively control data displayed on Dashboards
- Users can focus on subset of data
- Configurable
 - Choose from Distinct Values, Date Range, Number Range and Input Box
- Only apply filters to certain visuals
- Personalize Dashboards



Sharing a Dashboard



Via Informer UI



Via URL



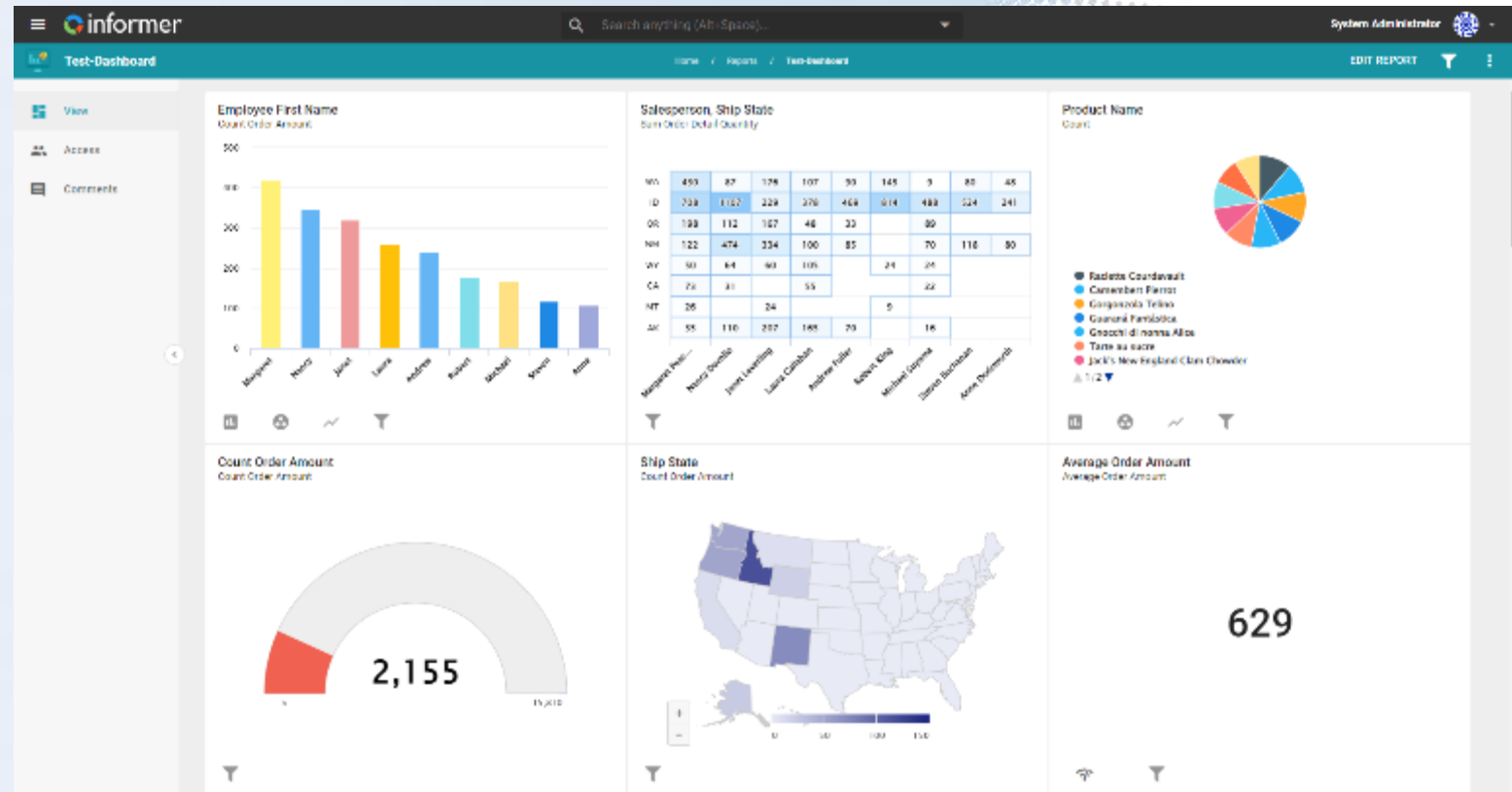
Embed in portal



Apply row-level security

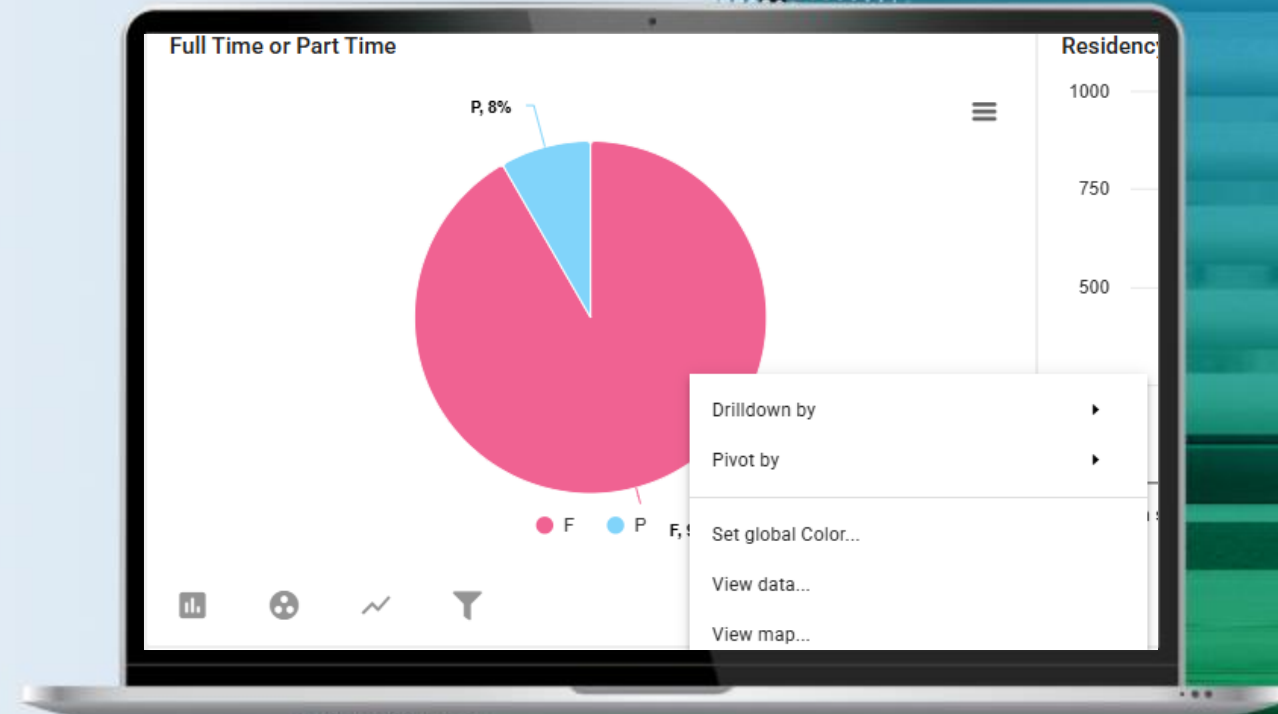


Apply Datasource Security



Interacting with a Dashboard

- Use post-query Filters
- Use Dashboard Input Filters
- Drilldown
 - Available on any field that exists in the Dataset
 - Datasource security applied
- Pivot data from visual
- Set global colors
- View Data
 - View details for all rows
 - Export results in multiple formats
- View Map from visual





Live Demo





Robin Lamb and Regina Lopez

