



# Fields from Another Dataset:

## Creating a Framework of Support

**Kalie Kilgore**

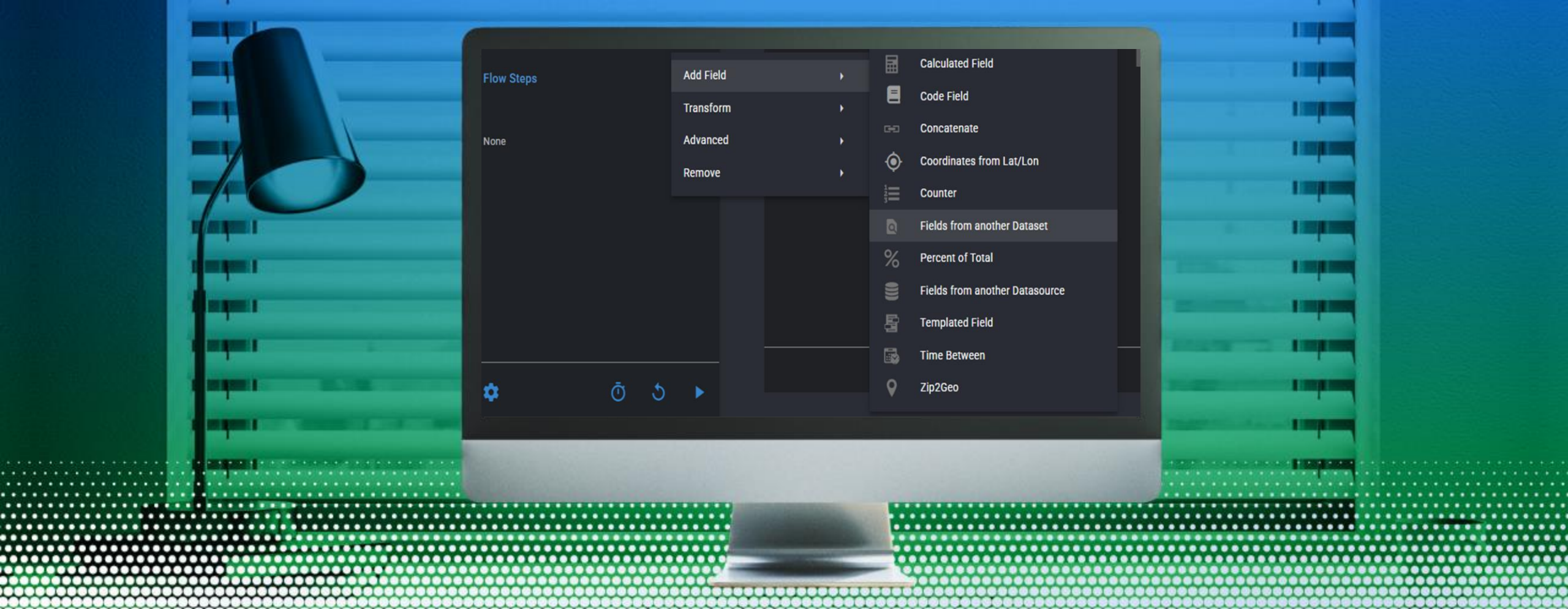
Director of Institutional Research and  
Reporting



# Agenda

1. Background
2. Choosing Main Datasets
3. Organizing, Updating and Refreshing
4. Tips
5. State Reporting





Flow Steps



Add Field



Fields from Another Dataset

Flow Steps

None

Add Field

Transform

Advanced

Remove



Calculated Field



Code Field



Concatenate



Coordinates from Lat/Lon



Counter



Fields from another Dataset



Percent of Total



Fields from another Datasource



Templated Field



Time Between



Zip2Geo

# Background



# Why Utilize Fields from Another Dataset

## Issue 1

- Duplicate datasets of almost identical data

## Issue 2

- Data inconsistency among users

## Issue 3

- Small IR Department

Flow Steps

None

Add Field

Transform

Advanced

Remove



Calculated Field



Code Field



Concatenate



Coordinates from Lat/Lon



Counter



Fields from another Dataset



Percent of Total



Fields from another Datasource



Templated Field



Time Between



Zip2Geo

## Choosing Main Datasets



# Things to Think About

1. How do mappings connect?
2. What different data breakdowns are used among my reports
3. What data am I consistently asked for?



# DACC Current Main Datasets



- All Financial Aid Awards
- Last Term Attended
- DACC Awards
- Credit Breakdowns
- Student Demographic
- Colleague Active Programs
- Student Programs
- Student Counselors
- Employees
- Section Data
- Course Data
- Student Program Information
- Financial Aid Information
- GPA Breakdowns
- All Credentials on File
- High School Students
- Cohorts
- Main PCS Code in Student Term

# DACC Current Main Datasets



- Transcripts and Institutions Attended
- Transfer Credits and Colleges (Transfer In)
- Term start and End Dates
- Retention and Persistence
- Campus Organizations
- Developmental Students
- Transfer Students (Transfer Out)
- Accommodations
- Organizations/Institutions
- Gatekeeper Students
- Co-Requisites
- Satisfactory Academic Progress
- Placement Scores/ACT and SAT Scores
- Academic Standings

# Main Dataset – Credit Breakdowns

- Different breakdowns of attempted credits both including and excluding W grades
- Different breakdowns of “Completed” grades
- Different student labels to allow for easy connecting



# Credit Breakdowns Continued

## Criteria

- Currently enrolled Students
- Term contains “202”

## Merge Duplicates

- Merged on Student and Term

## Main Breakdown Examples

- Credit/Noncredit (Including and excluding W's)
- Full Time/Part Time (Including and excluding W's)
- Web Totals
- Hybrid Totals
- Overall Totals
- Department of Corrections Totals
- Overall HS Totals
- High School Label
- Department of Corrections Label
- All Online Label
- Developmental Label
- Total Withdrawn Label

# Main Dataset – Student Demographics

- Different breakdowns of age, race and gender for reporting
- Houses:
  - First Generation Labels
  - Student Intent Labels
  - Birth Date
  - Social Security Number
  - Employment status



# Student Demographics Continued

## Race Breakdowns

- Final Determination
- Program Review
- Perkins
- Key Performance Indicators

## Gender Breakdowns

- Final Determination: Includes Categorizing other and unknown genders by gender identity
- Program Review
- Perkins
- Key Performance Indicators

## Age Breakdowns

- Beginning of FY
- Beginning of Term
- Program Review
- Key Performance Indicators

Flow Steps

None

Add Field

Transform

Advanced

Remove



Calculated Field



Code Field



Concatenate



Coordinates from Lat/Lon



Counter



Fields from another Dataset



Percent of Total



Fields from another Datasource



Templated Field



Time Between



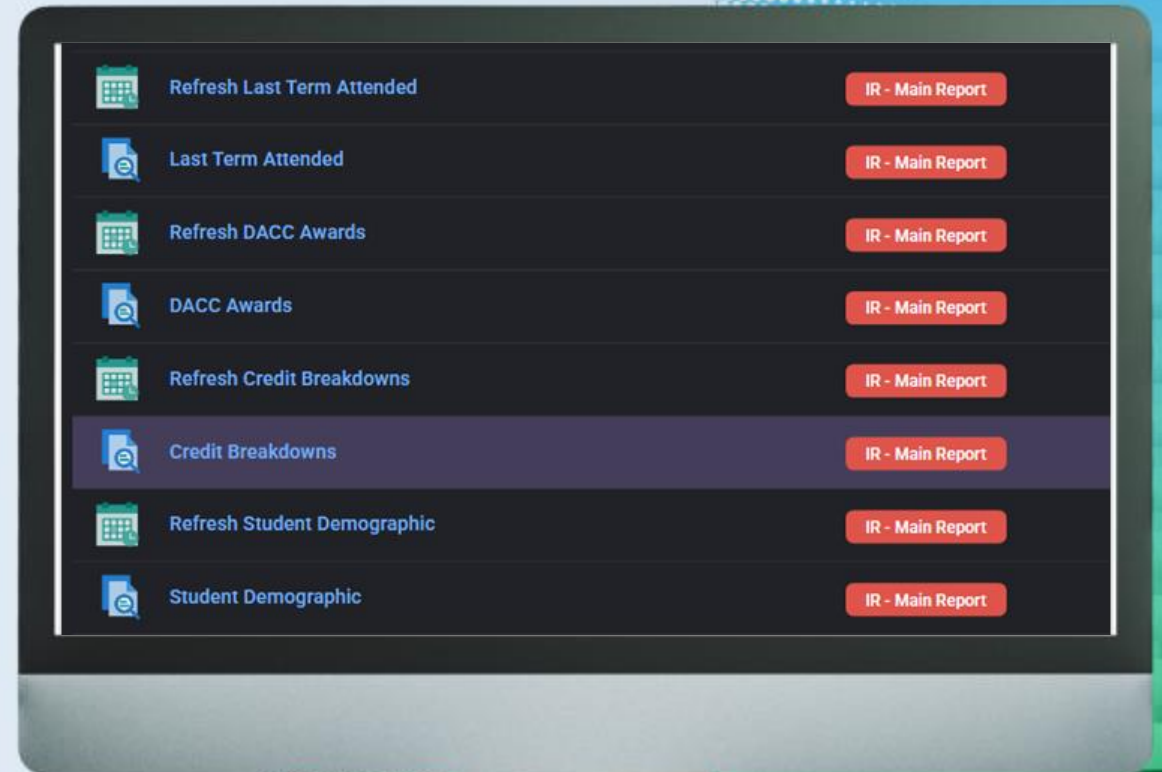
Zip2Geo

# Organizing, Updating & Refreshing



# Organization

- Utilize Tags



# Organization

- Utilize the Folders

Item	Folder
Refresh All Financial Aid Awards	IR / Main Report
All Financial Aid Awards	IR / Main Report
Refresh Last Term Attended	IR / Main Report
Last Term Attended	IR / Main Report
Refresh DACC Awards	IR / Main Report
DACC Awards	IR / Main Report
Refresh Credit Breakdowns	IR / Main Report
Credit Breakdowns	IR / Main Report
Refresh Student Demographic	IR / Main Report
Student Demographic	IR / Main Report
Refresh Colleague Active Programs	IR / Main Report

Folder	Count
IR	18
College Board	1
Completion Rates	3
Course/Curriculum	4
ECACE	1
Enrollment Report	6
Enrollment Status/Internal Cohorts	2
Enrollments	2
FOIA	3
Graduate and Leaver Tracker	1
HLC	2
ICCB Reporting	2
IPEDS	2
IR Report	2
KPI	9
Main Report	48
NC-SARA	1
NSC	2
Operation Graduation	5
Perkins	3

# Updating & Refreshing



## Refreshing

- Set up Main Reports to refresh on jobs overnight or on weekends
- Some Main Reports are manually refreshed once a semester

## Updating

- Once a field has been created it is not changed. (with some exceptions)
- New variations of data are created in new fields

Flow Steps

None

Add Field ▶

Transform ▶

Advanced ▶

Remove ▶



Calculated Field



Code Field



Concatenate



Coordinates from Lat/Lon



Counter



Fields from another Dataset



Percent of Total



Fields from another Datasource



Templated Field



Time Between



Zip2Geo

# Tips

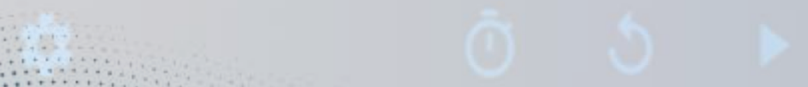


- Be mindful of naming.
- Utilize comments and descriptions.
- Create job schedules that work for your institution.
- Be careful when connecting main reports to each other.
- Stay up to date on how data is collected and maintained in your system.
- Know when adding to much information is to much.

# State Reporting

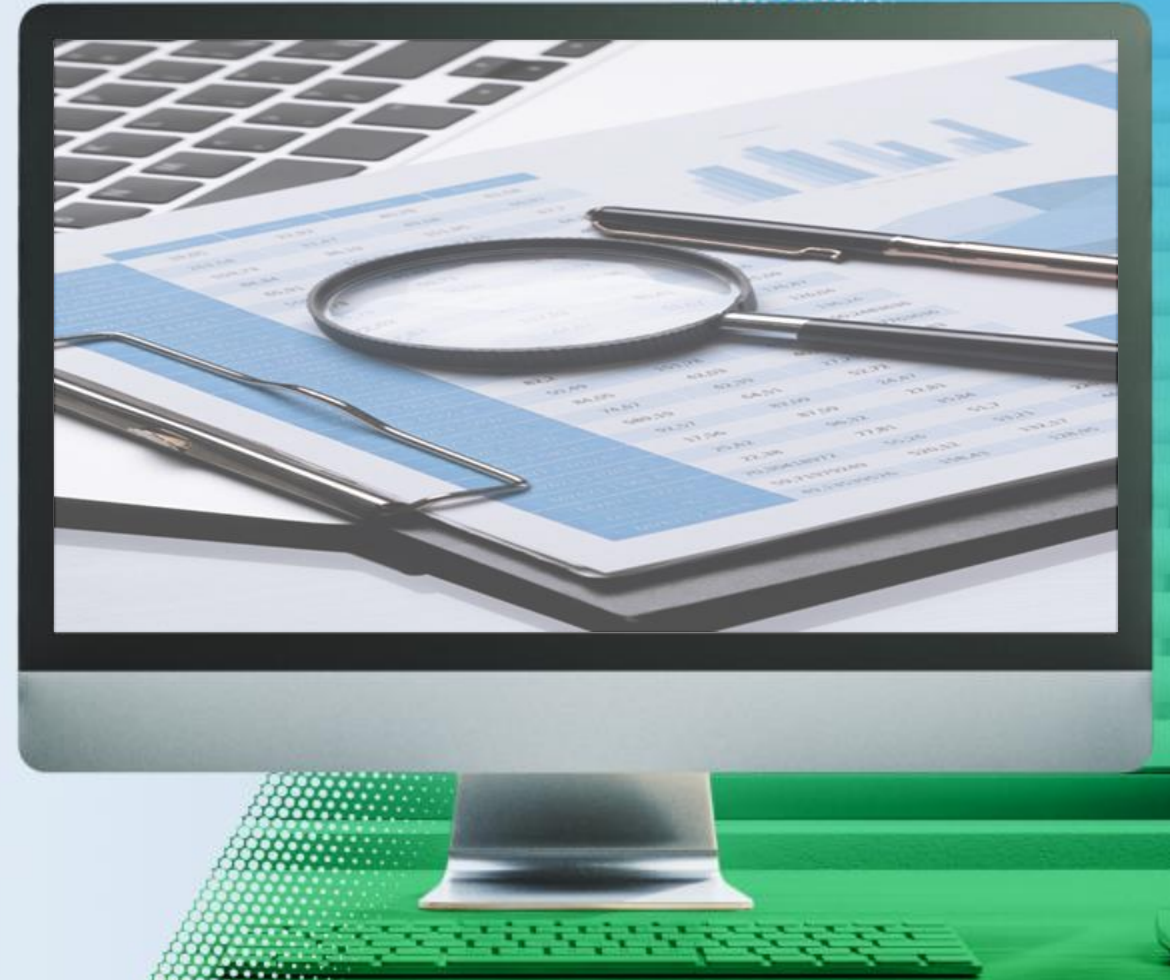
- Add Field
- Transform
- Advanced
- Remove

- Calculated Field
- Code Field
- Concatenate
- Coordinates from Lat/Lon
- Counter
- Fields from another Dataset
- Percent of Total
- Fields from another Datasource
- Templated Field
- Time Between
- Zip2Geo



# State Reporting

- State reporting is always lengthy and cumbersome.
- Utilizing this system has allowed me to silo state reporting with different/difficult definitions into its own area. (I also utilize a team called ICCB Reporting to house my state reporting main datasets)
- State reporting main reports I manually refresh in order when compiling and finalizing the report for submission.



Flow Steps

- Calculated Field  
Financial Aid Year
- Calculated Field  
Summer Term
- Calculated Field  
Fall Term
- Calculated Field  
Spring Term
- Calculated Field  
HS
- Calculated Field  
ACT
- Calculated Field  
SAT
- Fields from another Dataset  
Adding Fields...
- Fields from another Dataset  
Adding Fields...
- Fields from another Dataset  
Adding Fields...

- Fields from another Dataset  
Adding Fields...
- Fields from another Dataset  
Adding Fields...
- Fields from another Dataset  
Adding Fields...
- Fields from another Dataset  
Adding Fields...
- Fields from another Dataset  
Adding Fields...
- Fields from another Dataset  
Adding Fields...
- Fields from another Dataset  
Adding Fields...
- Fields from another Dataset  
Adding Fields...
- Fields from another Dataset  
Adding Fields...
- Fields from another Dataset  
Adding Fields...
- Fields from another Dataset  
Adding Fields...

- Fields from another Dataset  
Adding Fields...
- Fields from another Dataset  
Adding Fields...
- Fields from another Dataset  
Adding Fields...
- Fields from another Dataset  
Adding Fields...
- Fields from another Dataset  
Adding Fields...
- Fields from another Datasource  
1 Remote Field from  
Map Eligibility Report
- Fields from another Datasource  
1 Remote Field from Merit  
Based Fa From Foundations
- Calculated Field  
Disability Status
- Calculated Field  
Disadvantaged Status
- Calculated Field  
Occupational CIP of  
ABE/ASE/REM Students
- Calculated Field  
High School Percentile Rank
- Calculated Field  
ACT Composite Score

- Calculated Field  
ACT Composite Test Date
- Calculated Field  
Minimum Fall 93  
Enrollment Status
- Calculated Field  
Term When 93 Admissions Met
- Calculated Field  
Fiscal Year when  
93 Admission met
- Calculated Field  
Transfer Plans
- Calculated Field  
High School Graduation or  
HSE Test Completion Year
- Calculated Field  
High School Code
- Calculated Field  
Illinois Articulation  
Initiative GECC Status
- Calculated Field  
Student Level
- Calculated Field  
Pell Grant Status
- Calculated Field  
Student Dependency Status
- Calculated Field  
Map Recipient



**Thank You**

