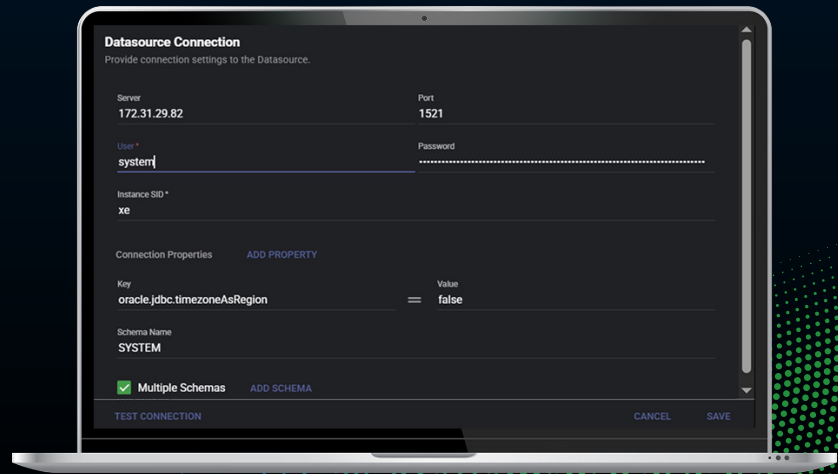




# Effortlessly Connect to Your Banner Database

Experience a seamless and secure way to access your data!



## Simple. Secure. Streamlined.

Connecting to your Banner database is quick and easy. Our intuitive interface walks you through every step, so you can get connected and start working with your data in no time.

## Get Started in Minutes

### 1. Select Your Database Type

To establish a connection, first select the Oracle database type. A connection form will appear, requiring specific details based on the selected database type. The fields in this form vary depending on the chosen Datasource.

### 2. Select Your Database Type

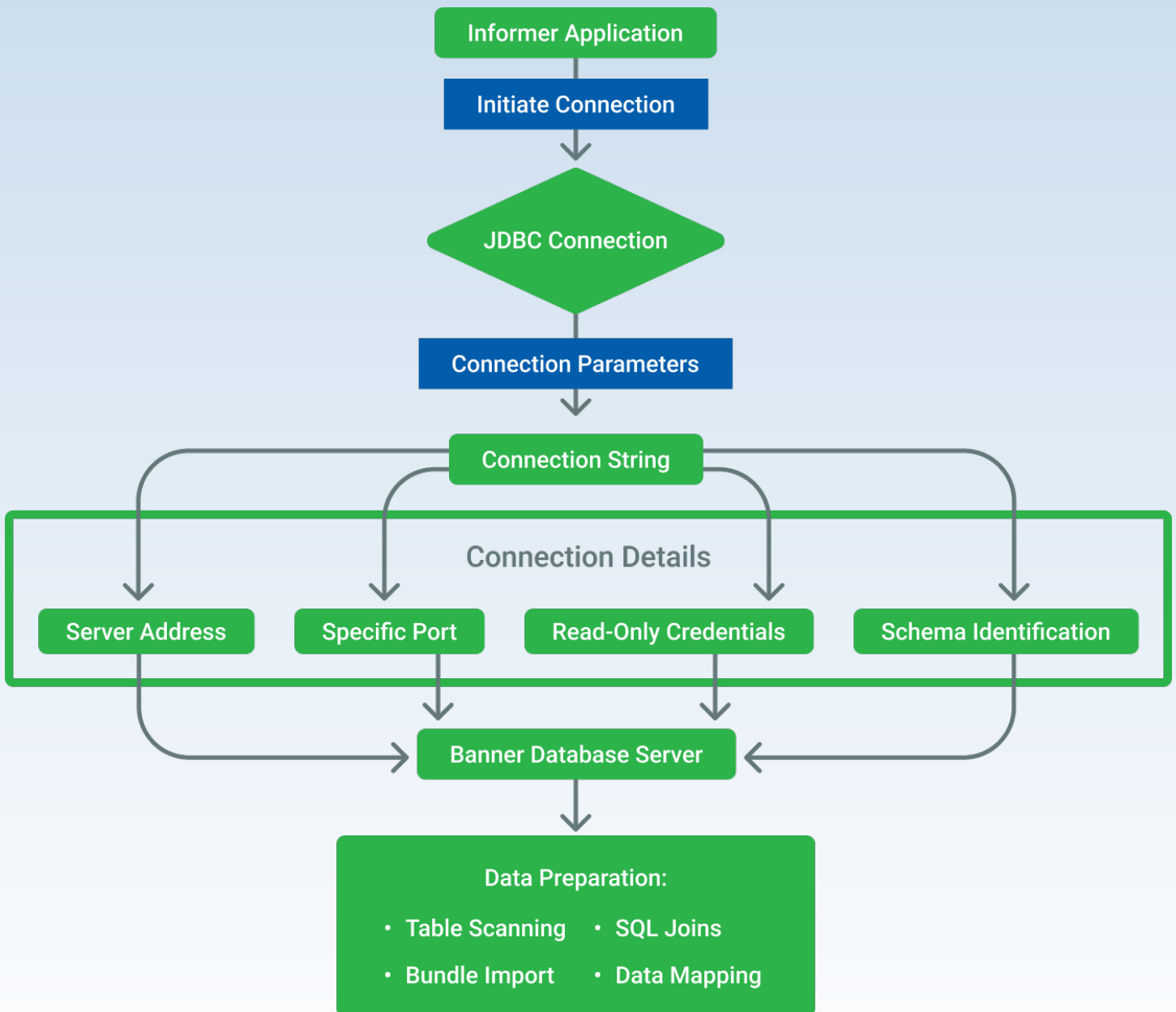
- **Datasource Name:** Assign a unique name to your connection.
- **Connection String:** Enter your server name, port, and instance.
- **Connection Properties**
  - **User Credentials:** Enter the username and password to connect to the database with.
  - **Database Name**—Specify the database you wish to connect to
  - **Send Time as Date Time**—Enter true or false — defaults to false.
- **Schema Name**—If there is a schema, enter that here.
- **Multiple Schemas**—Check this box if there are multiple schemas. To add additional schemas, click on the resulting “Add Schemas” button.
- **Transaction Isolation Level**—defaults to “Read Uncommitted”. This setting allows records in the Database to remain unlocked if they are getting queried.

### 3. Test & Save

- Click Test Connection to verify your setup.
- Save your Datasource and you’re ready to go!

# Connect your Banner Database to Informer with confidence.

Power your insights.



## Need Help Getting Started?

Our support team is here for you!

Reach out to us for one-on-one assistance with your Banner Database connection!

✉ Informer 5: [i5support@entrinsik.com](mailto:i5support@entrinsik.com)

✉ Informer 4: [support@entrinsik.com](mailto:support@entrinsik.com)