

Informer™ Case Study

Chapman University

Situation

The IT team needed to provide self-service reporting capabilities to reduce the resources committed to providing customized reports, while providing faster results to end users across several departments.

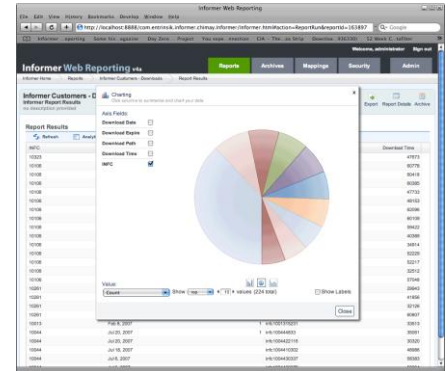
Success

With Informer, Chapman has over 100 end users running approximately 65 scheduled reports on a weekly and daily basis. They love being able to access data and connect directly to the database to create ad-hoc reports right at their desktop.

Challenge | Overdependence on IT for Reporting

William Parks, Programmer/Analyst, and the IT team at Chapman University are responsible for supporting the management and delivery of student, faculty, financial, alumni, and donor information across the organization.

With several reporting tools in place, end-users at Chapman were highly dependent on the IT department for assistance with reporting – with tasks like creating computed columns - to get the information they needed. Users typically had little or no access to tools that allowed them to easily and simply manipulate reports so that quick adjustments can be made; instead, they had to “queue up” their requests and wait for the IT department. “It was important to eliminate the multiple requests IT was receiving”, says William Parks.



“End-users like the ability to schedule reports and have them emailed out to others – it really simplifies their job”.

William Parks | Programmer / Systems Analyst
Chapman University

Solution | Implement Informer Web Reporting

Informer was recommended to Chapman by several schools already using the software. After downloading the 30 day trial, Chapman selected Informer as a cost-effective reporting solution to securely access their data anytime, anywhere via the Web. Now, the power to make reporting changes is in the hands of their decision makers, freeing up scarce IT resources to focus on real systems problems.



Entrinsik, Inc.
7501 Creedmoor Road
Suite 102
Raleigh, NC 27613

tel :: 888 703 0016
fax :: 919 848 4829

www.entrinsik.com

Results | Empower end users to free up IT

By implementing Informer, Chapman University now has easy, quick, and intuitive access to departmental data in real time. With dynamic table joins between related files, Informer enables end-users to now set up links between files, eliminating the need to create computed columns.

“The best features of Informer for us include scheduling and emailing reports, querying on multiple files, Live Excel integration, the ability to establish categories, the ability to use a LDAP authentication and the flexibility of role security”, says Parks.

For a demonstration of Informer or a free trial call us today at 888-703-0016 or email at sales@entrinsik.com.



“After years of not being able to get a reporting tool functioning for our end users, Informer was a huge hit. I like the fairly regular schedule of enhancements from Entrinsik. Informer support is excellent.”

William Parks | Programmer / Systems Analyst
Chapman University

About Entrinsik

Entrinsik's database reporting and analytics software and services enable organizations to make informed business decisions that enhance performance and improve bottom lines. With thousands of users across various industries worldwide, Entrinsik's Informer™ Web Reporting solution is an industry leader in real-time data delivery — anytime, anywhere, from one intuitive interface. The March 2009 release of Informer 4.0 combines Entrinsik's 25 years of industry expertise with the latest web tools and technology to deliver an easy-to-use operational reporting solution that securely extracts data, performs analyses, and generates reports from multiple databases without the need for data warehouse management. The company, founded in 1984, is headquartered in Raleigh, NC.

For a demonstration of Informer or a free trial, call us today at 888-703-0016 or email us at sales@entrinsik.com.



Entrinsik, Inc.
7501 Creedmoor Road
Suite 102
Raleigh, NC 27613
tel :: 888 703 0016
fax :: 919 848 4829

www.entrinsik.com